

March maple mania

March in the County means maple. When the days are slowly getting longer and warmer but the nights are still cool, miles and miles of tubing begin to fill with sap flowing from maple trees. On March 25 and 26 the County will be flowing with people celebrating this natural occurrence and the flavour and symbol associated internationally with Canada at Maple in the County.

In its sixth year, Maple in the County continues to expand, offering more to see and do all the way from Wellington to Waupoos. In addition to the traditional sugar bush tours, there is music, face painting, cooking classes, maple art and photography shows, ice carving a petting zoo and, new this year, a pancake eating contest which emphasizes the common thread running through this celebration—namely how many different ways maple can be consumed. Martinis, cheese, ice cream, hot dogs, taffy on ice, soup, ribs, salsa, salmon, chili, sausages, crepes and of course waffles and pancakes, are all on the list of things that you can try with maple.

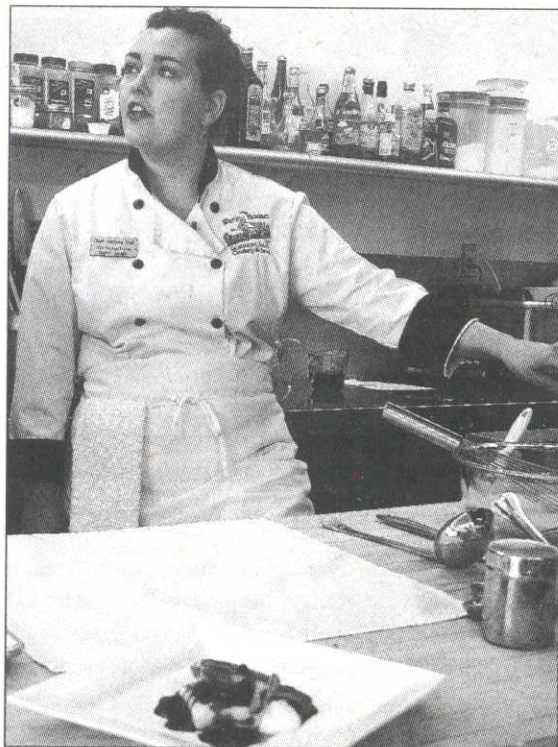


PHOTO: KATHLEEN SABYAN

Chef Andrea Mut of The Waring House Cookery School demonstrates the preparation of maple blintzes at the Maple in the County 2007 launch held last week at The Waring House. Mut is offering the cookery class, Baking with Maple, as part of the two day-celebration of all things maple.